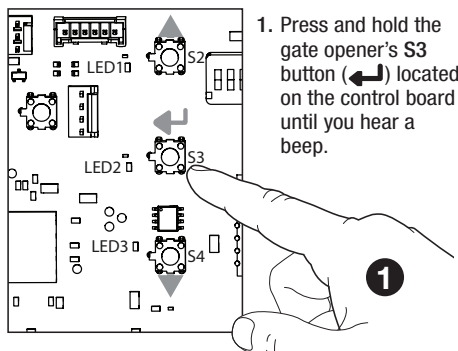
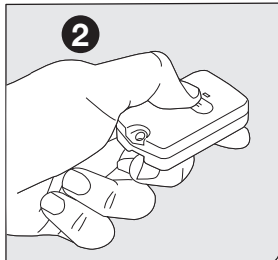


## Programming the FM134 and FM135 Remote to Mighty Mule **MM371**, **MM372**, **MM571** or **MM572** Automatic Gate Openers



1. Press and hold the gate opener's S3 button (↵) located on the control board until you hear a beep.



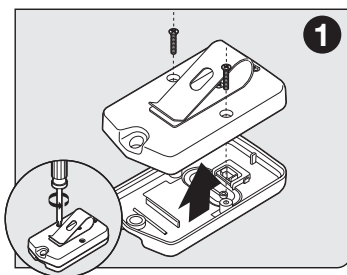
2. Press and hold the desired button on the remote (until you hear a beep) to complete programming process. The remote is now programmed to the gate opener.

**NOTE:** To program any subsequent FM134 or FM135 remotes after the first, simply adjust the dip switch pattern to match the already programmed remote. An infinite number of the transmitters may be programmed in this manner.

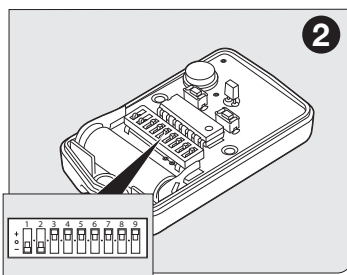


## Entry Transmitters

## Programming the FM134 and FM135 Remote to Mighty Mule **MM271** or **MM272** Automatic Gate Openers

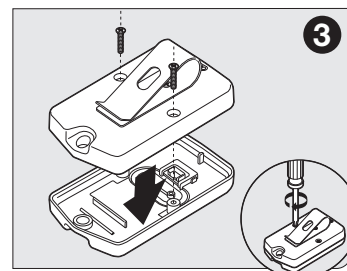


1. Remove back cover of the opener remote.

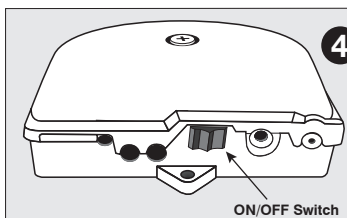


2. Use small screwdriver to move switches to random positions. If you have more than one transmitter, set them all with the same code.

**NOTE:** To program any subsequent FM134 or FM135 remotes after the first, simply adjust the dip switch pattern to match the already programmed remote. An infinite number of the transmitters may be programmed in this manner.

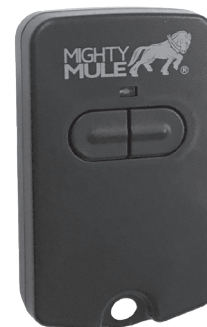


3. Replace and secure back cover of the opener remote.

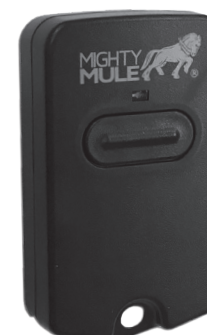


4. Power off control box. Press and hold a transmitter button while sliding the ON/OFF switch to the ON position. Continue to hold the selected transmitter button for 8-10 seconds. You will hear a single or a series of beeps, followed by a pause then a single beep. Release transmitter's button. Your personal code is now programmed to that button.

**NOTE:** The process for programming any wireless accessory in the same process as erasing that accessory. There is no indication that the accessory has been programmed or erased. Make sure to test the accessory before programming, because you may unintentionally erase it.



**FM134**  
Two Button



**FM135**  
Single Button



Mighty Mule Sales: 800-543-4283  
Mighty Mule Technical Support: 800-543-1236  
(Mon-Fri 8am - 7pm EST • Saturday 10am - 6:30pm EST)  
5919 Sea Otter Place, Carlsbad, CA, 92010  
For more information on Mighty Mule's full line of Automatic Gate Operators, Gate Openers and Access Controls visit  
[www.mightymule.com](http://www.mightymule.com)



©2021 Nortek Security & Control LLC. All rights reserved. Mighty Mule is a registered trademark of Nortek Security & Control LLC.

# User Guide

# FM134

## Two Button Entry Transmitter

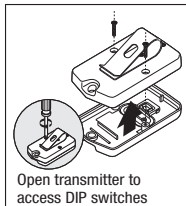
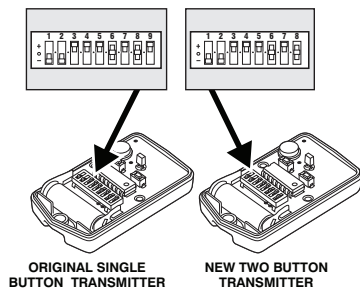
The two button transmitter is used for the remote control of two gate openers or a gate opener and a garage door opener. A Universal Receiver (RB709U-NB) is required for use with garage door openers.

### Instructions for adding additional entry transmitter(s)

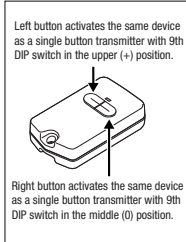
If you already have a Two Button transmitter that operates your gates and are simply adding an additional Two Button transmitter, set the DIP switches in the new transmitter to match the DIP switches in your original transmitter, reassemble the transmitters and you are done.

**If you are matching your two button transmitter to a single button transmitter follow these steps:**

1. Match the eight DIP switches found in the dual button transmitter to the first eight DIP switches in the single button transmitter.
2. The ninth DIP switch on the single button transmitter cannot be in the lowest position (-); it must be changed to the upper (+) or middle (0) position at this time.
3. If the ninth DIP switch is set to the upper position (+) the left hand button will be used to send the same code when using the dual button remote.
4. If the ninth DIP switch is set to the middle position (0) the right hand button will be used to send the same code when using the dual button remote.
5. If you change the ninth DIP switch in the original transmitter refer to Program New Transmitter Setting to Gate Opener's Memory section below.



Open transmitter to access DIP switches



Right button activates the same device as a single button transmitter with 9th DIP switch in the middle (0) position.

### Instructions for replacing a lost entry transmitter

If you are replacing a lost transmitter and you know or have your original transmitter's DIP switch setting written down, set the new transmitter DIP switches to that setting and it is ready to activate your gate opener.

If you don't know the DIP switch setting from your original transmitter, you will need to select a new setting.

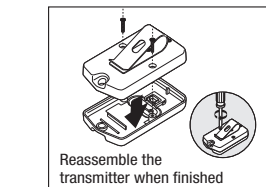
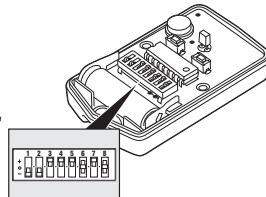
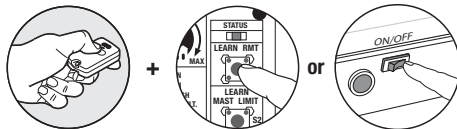
#### Personalize your Transmitter Setting

There are eight (8) DIP switches, each of which can be placed in three different positions (+, 0, -). DO NOT set all switches in the same position, such as all +, all -, or all zeros.

#### Program New Transmitter Setting to Gate Opener's Memory

Some gate openers are programmed with a LEARN REMOTE or LEARN TRANSMITTER button and some with the ON/OFF switch.

See page 4 for transmitter programming instructions for Mighty Mule MM271, MM272, MM371, MM372, MM571 or MM572 Automatic Gate Openers.



Reassemble the transmitter when finished

**NOTE:** If the red light on the transmitter is dim or flickers when the transmitter button is pushed, the transmitter battery may be weak. Replace when necessary with a A23S 12 Volt battery.

### ONE YEAR LIMITED WARRANTY

Your Mighty Mule accessory is warranted by the manufacturer against defects in materials and manufacturer workmanship for a period of one (1) year from date of purchase, provided the recommended installation procedures have been followed.

Nortek Security & Control (NSC) sells its products through authorized retail and on-line channels to ensure that consumers obtain quality pre-sale and after sale support and service. The warranty on NSC products is NOT VALID if the products have been purchased from an unauthorized, on-line E-tailer (e.g., E-bay® sellers who are not authorized NSC resellers), or if a product's serial number has been altered, removed, or replaced in any way. To verify that you are buying from an authorized, on-line NSC e-tailer, visit [www.mightymule.com](http://www.mightymule.com), or call 1-800-543-4283.

In the case of product failure due to defective material or manufacturer workmanship within the one (1) year warranty period, the opener will be repaired or replaced (at the manufacturer's option) at no charge to the customer, if returned freight prepaid to Mighty Mule, 5919 Sea Otter Place, Carlsbad, CA 92010. IMPORTANT: Call (850) 575-4144 or Fax (850) 575-8950 for a Return Goods Authorization (RGA) number before returning item(s) to the factory. Products shipped to the factory without an RGA number will not be accepted. Replacement or repaired parts are covered by this warranty for the remainder of the one (1) year warranty period or six (6) months, whichever is greater. NSC will pay shipping costs (equal to United Parcel Service ground rate for return to owner of item(s) repaired under warranty).

The manufacturer will not be responsible for any charges or damages incurred in the removal of the defective parts for repair, or the reinstallation of these parts after repair. Use of any components that are not NSC specified (e.g. battery or transformer) will void the warranty. This warranty shall be considered void if damage to the product(s) was due to improper installation or use, use of non-NSC specified or approved components or replacement parts, connection to an improper power source, or if damage was caused by lightning, electrical power surge, wind, fire, flood, insects, or other natural agents.

This warranty gives you specific legal rights, and you may also have other rights which may vary from state to state. This warranty is in lieu of all other warranties, either expressed or implied. After the one (1) year warranty period expires, NSC (or one of its authorized service centers) will perform necessary repairs for a nominal fee. Call Mighty Mule at (800) 543-1236 for more information.

# FM135

## Single Button Entry Transmitter

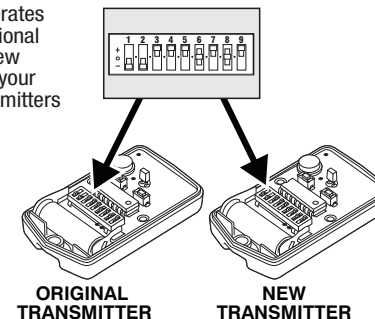
You can have as many transmitters as you want for family and guests to open your gate. The DIP switches in all the transmitters for a particular gate opener must be set the same.

### Instructions for adding additional entry transmitter(s)

If you already have a transmitter that operates your gate and are simply adding an additional transmitter, set the DIP switches in the new transmitter to match the DIP switches in your original transmitter, reassemble the transmitters and you are done.

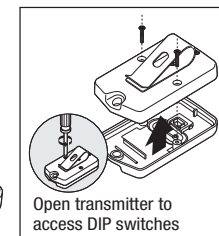
#### IMPORTANT:

if you change the DIP switches in the original transmitter refer to Program New Transmitter Setting to Gate Opener's Memory section below.



ORIGINAL TRANSMITTER

NEW TRANSMITTER



Open transmitter to access DIP switches

### Instructions for replacing a lost entry transmitter

If you are replacing a lost transmitter and you know or have your original transmitter's DIP switch setting written down, set the new transmitter DIP switches to that setting and it is ready to activate your gate opener.

If you don't know the DIP switch setting from your original transmitter, you will need to select a new setting.

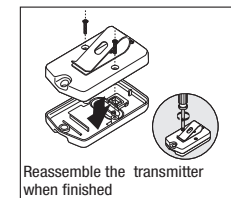
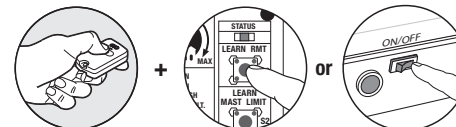
#### Personalize your Transmitter Setting

There are nine (9) DIP switches, each of which can be placed in three different positions (+, 0, -). DO NOT set all switches in the same position, such as all +, all -, or all zeros.

#### Program New Transmitter Setting to Gate Opener's Memory

Some gate openers are programmed with a LEARN REMOTE or LEARN TRANSMITTER button and some with the ON/OFF switch.

See page 4 for transmitter programming instructions for Mighty Mule MM271, MM272, MM371, MM372, MM571 or MM572 Automatic Gate Openers.



Reassemble the transmitter when finished

**NOTE:** If the red light on the transmitter is dim or flickers when the transmitter button is pushed, the transmitter battery may be weak. Replace when necessary with a A23S 12 Volt battery.

**FCC WARNING:** Changes or modifications to this unit not expressly approved by the party responsible for compliance could void the user's authority to operate the equipment.

**NOTICE:** This device complies with part 15 of the FCC rules and with Industry Canada license-exempt RSS standard(s). Operation is subject to the following two conditions: (1) this device may not cause interference, and (2) this device must accept any interference, including interference that may cause undesired operation of the device.

Le présent appareil est conforme aux CNR d'Industrie Canada applicables aux appareils radio exempts de licence. L'exploitation est autorisée aux deux conditions suivantes: (1) l'appareil ne doit pas produire de brouillage, et (2) l'utilisateur de l'appareil doit accepter tout brouillage radioélectrique subi, même si le brouillage est susceptible d'en compromettre le fonctionnement.

However, there is no guarantee that interference will not occur in particular installations. If this equipment does cause harmful interference to radio or television reception, which can be determined by turning the equipment off and on, the user is encouraged to try to correct the interference by one or more of the following measures: • Reorient or replace the receiver antenna. • Increase the separation between the equipment and the receiver. • Connect the equipment into an outlet on a circuit different from that to which the receiver is connected. • Consult the dealer or an experienced radio/TV technician for help.